



Morbi - Gujarat - INDIA.



PREMIUM QUALITY  
**FRP** MANHOLE  
COVER

Product  
Catalogue





## ABOUT US

Welcome to Shree Hari Export house world, your number one source for FRP manhole cover, water gully cover and grating.

We're dedicated to giving You the very best of fibre products, with a focus on product quality, customer satisfaction and ethical practices. Our team started out passion for tough and durable products and it drove them to do tons of research so that Shree Hari Export House fibre world can Offer You tough and durable fibre products.

We now serve customers all over india.







## COMMITTED IN QUALITY

Welcome to Shree Hari Export House world, your number one source for FRP manhole cover, water gully cover and grating.

We're dedicated to giving you the best fibre products, with a focus on product quality, customer satisfaction and ethical practices. Our team started out with passion for tough and durable products and it drove them to do tons of research so that our fibre products can offer tough and durable fibre products.

We now serve customers all over India.

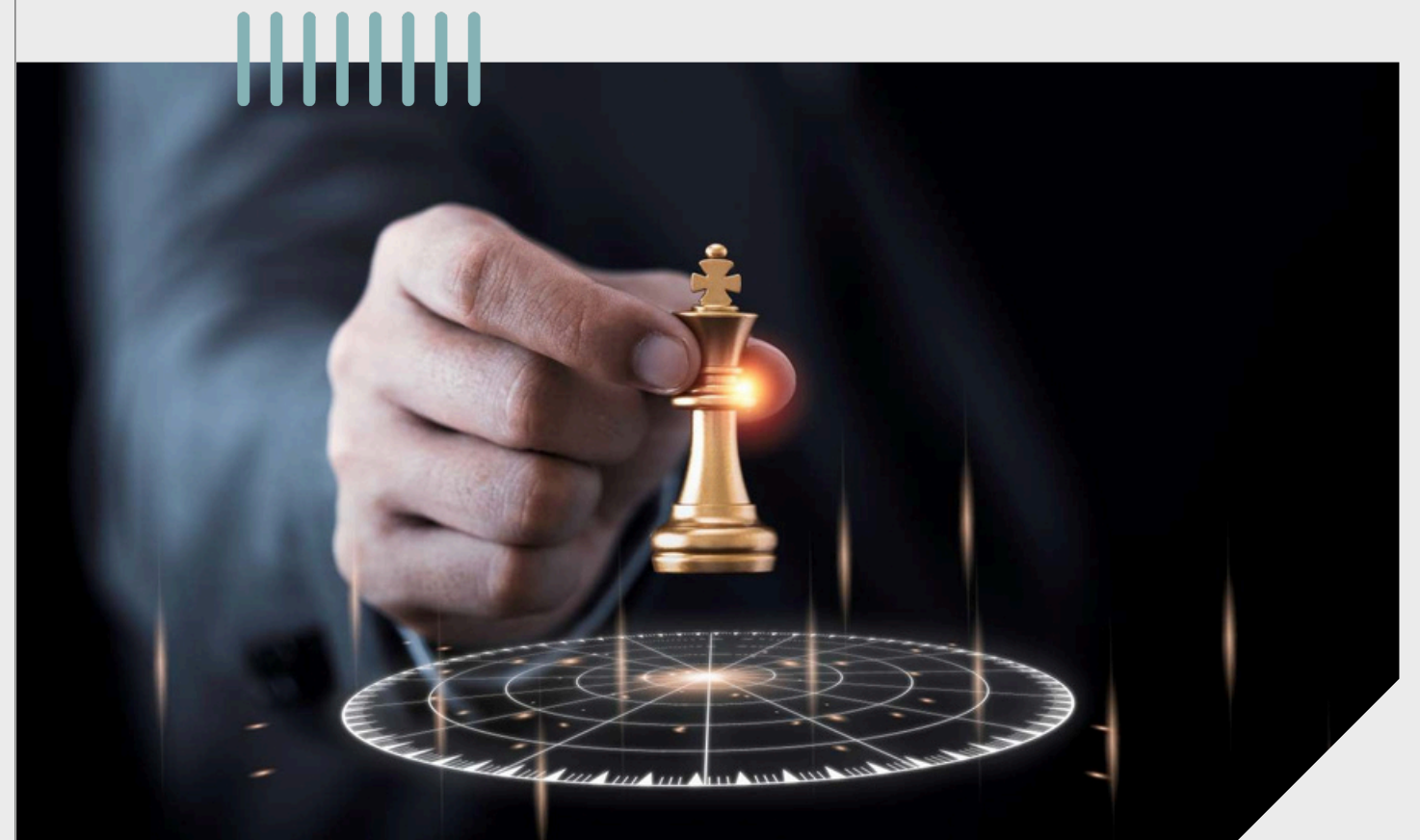
## COMMITTED IN QUALITY

To enhance the quality of product and give new definition to the strength of fibre products.

In everything we do we are committed to our values and our every Action is accelerated towards our vision.

We founded the company with the vision to provide the best quality products to people for their investments.

With the mission to become a world market leader that sets its own standard and make India stand in the world market with the highest grade "MADE IN INDIA" products.



# FRP

Fiberglass

Reinfor

Pla



## WHAT IS FRP ?

Is A Composite Material Made Of A Polymer Matrix Reinforced With Fibers? The Fibers Are Usually Glass Fibers, The Polymer Is Usually An Epoxy, Vinyl ester Or Polyester Thermosetting Plastic, And Phenol-Formaldehyde Resins Are Still In Use.

FRP Are Commonly Used In The Aerospace, Automotive, Marine, Construction Industries And Ballistic Armor.

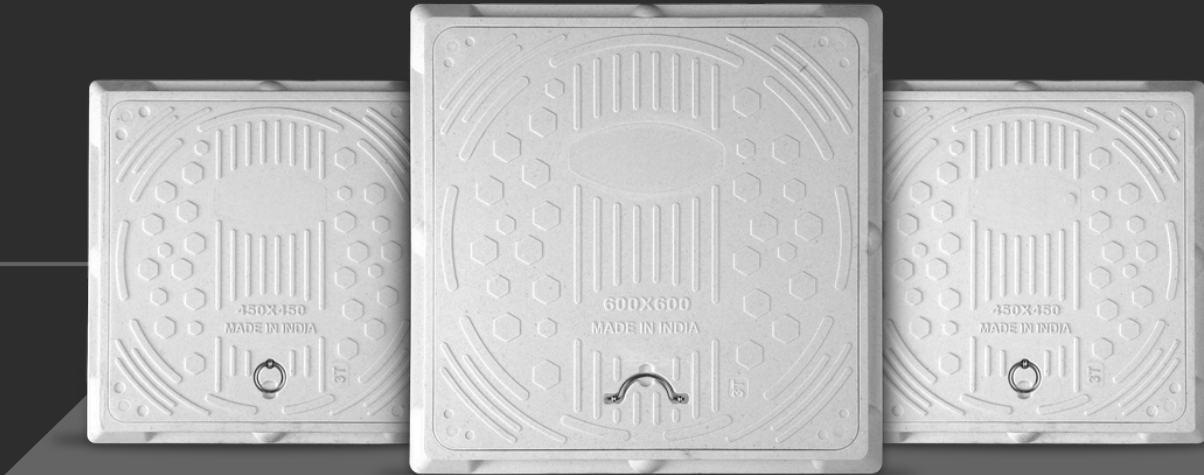


# COMPRESSION MOULDING

When The Raw Material Containing Reinforced Fibers Are Compressed & Molded At Certain Pressure & Temperature The Final Outcome Would Be Called A Frp Molded Product, Which Qualifies It As A Fibre-reinforced Polymer. More Typically The Polymer Preform used In Com-pression Molding Does Contain Reinforcing Fibers. In Compression Molding, A "preform" Or "charge", Of SMC, BMC Is Placed Into Molding Cavity, The Mold Is Closed And The Material Is Formed & Cured Inside By Pressure And Heat. Compression Molding Offers Excellent Detailing For Geometric Shapes Ranging From Pattern And Relief Detailing To Complex Curves And Creative Forms, To Precision Engineering All Within A Maximum Curing Time Of 20 Minutes.

## SIZES

10X10	18X18	12X18	15X15	28X28
12X12	18X24	21X21	24X24	30X30

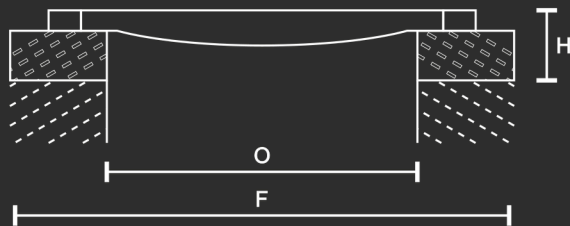
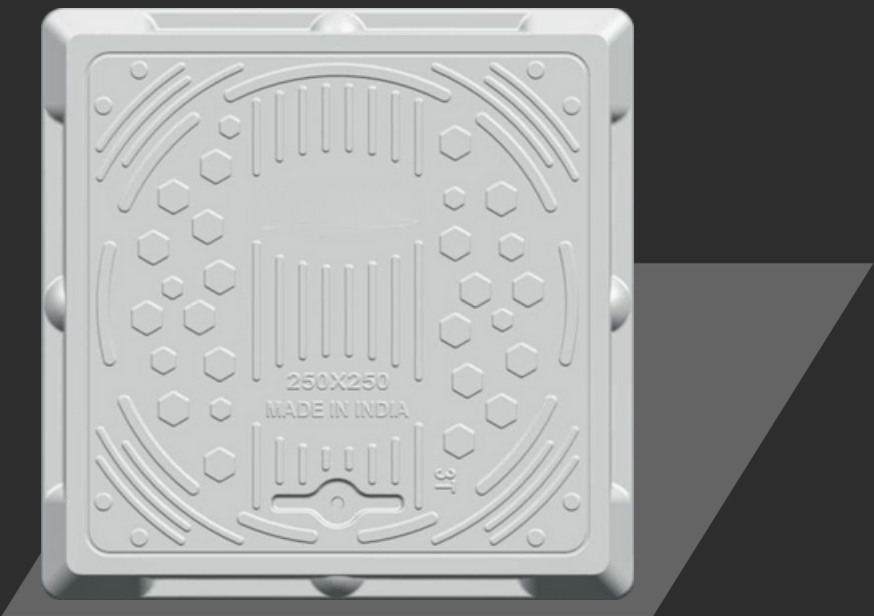


# ADVANTAGES & LIMITATIONS

FRP Allows The Alignment Of The Glass Fibres To Suit Specific Design Programs. Specifying The Orientation Of Reinforcing Fibres Can Increase The Strength And Resistance To Defor- mation Of The Polymer. Glass Reinforced Polymers Are The Strongest And Most Resistive To Deforming Forces When The Polymers Fibres Are Being Exerted With A Parallel Force.



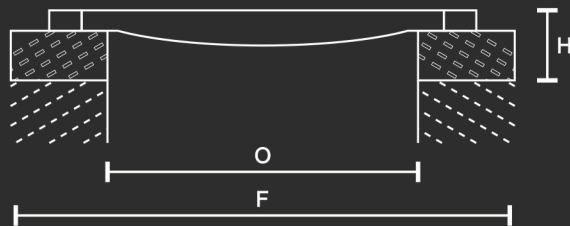
SQUARE  
MANHOLE COVER



SIZE	OUTER SIZE	CLEAR OPENING SIZE	WEIGHT
10"x10"	270x270mm	210x210mm	1.8 Kg.



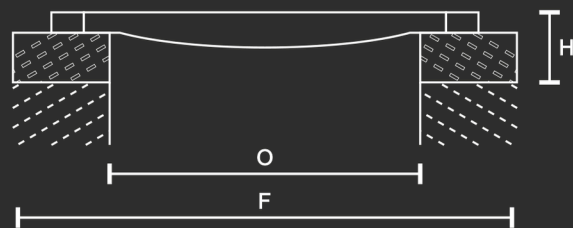
SQUARE  
MANHOLE COVER



SIZE	OUTER SIZE	CLEAR OPENING SIZE	WEIGHT
12"x12"	310x310mm	250x250 mm	2.8 Kg.



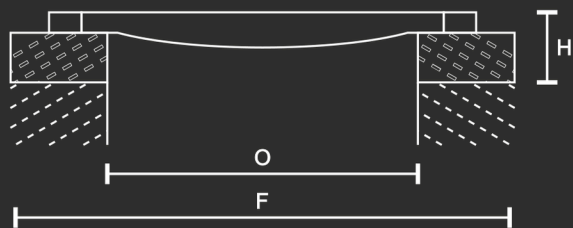
SQUARE  
MANHOLE COVER



SIZE	OUTER SIZE	CLEAR OPENING SIZE	WEIGHT
15"x15"	380x380mm	300x300 mm	4.5 Kg.



SQUARE  
MANHOLE COVER

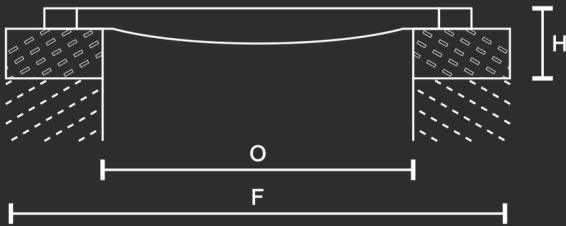


SIZE	OUTER SIZE	CLEAR OPENING SIZE	WEIGHT
18"x18"	460x460mm	365x365mm	6.5 Kg.





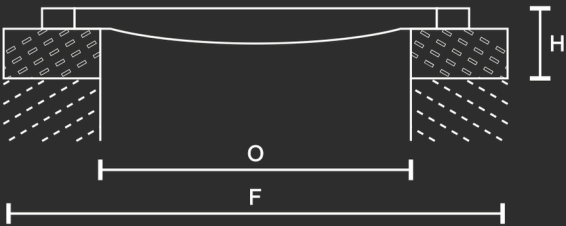
SQUARE  
MANHOLE COVER



SIZE	OUTER SIZE	CLEAR OPENING SIZE	WEIGHT
21"x21"	535x535mm	450x450 mm	10.5 Kg.



SQUARE  
MANHOLE COVER

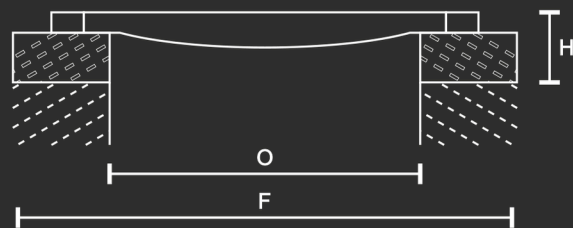


SIZE	OUTER SIZE	CLEAR OPENING SIZE	WEIGHT
24"x24"	610x610mm	510x510mm	13 Kg.





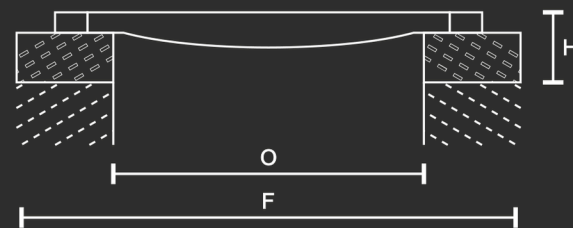
SQUARE  
MANHOLE COVER



SIZE	OUTER SIZE	CLEAR OPENING SIZE	WEIGHT
28"x28"	710x710mm	610x610 mm	19 Kg.



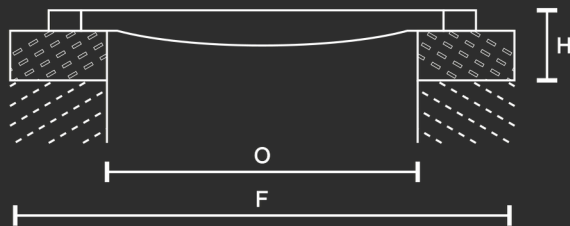
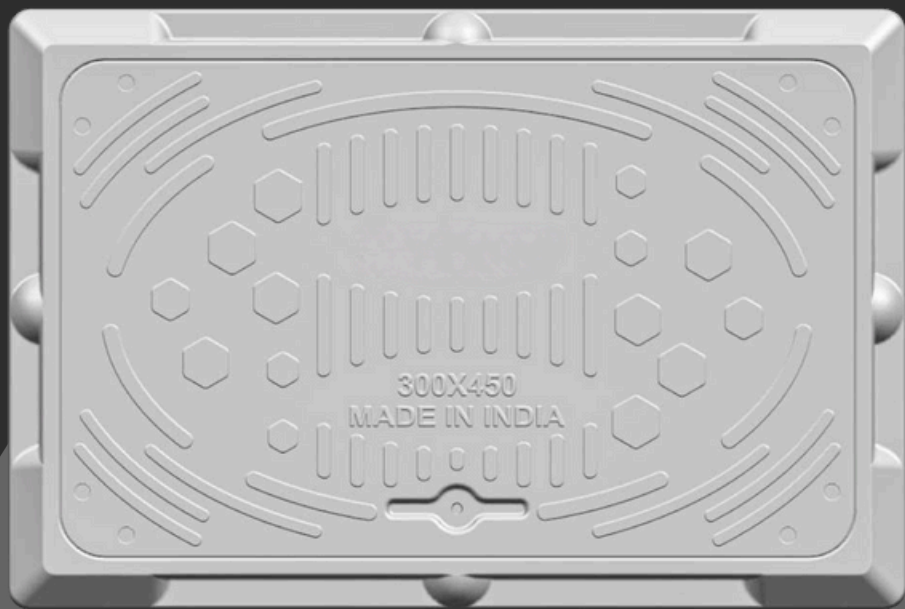
SQUARE  
MANHOLE COVER



SIZE	OUTER SIZE	CLEAR OPENING SIZE	WEIGHT
30"x30"	760x760mm	610x610mm	22 Kg.



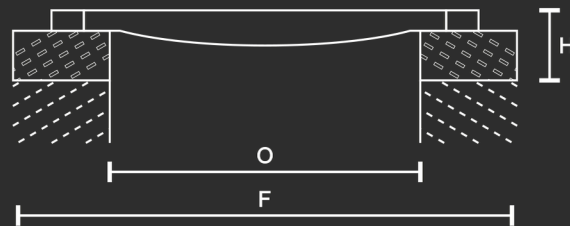
RECTANGLE  
MANHOLE COVER



SIZE	OUTER SIZE	CLEAR OPENING SIZE	WEIGHT
12"x18"	310x460mm	250x365 mm	4.5 Kg.



RECTANGLE  
MANHOLE COVER



SIZE	OUTER SIZE	CLEAR OPENING SIZE	WEIGHT
18"x24"	460x610mm	365x510 mm	10.5 Kg.